

How Family Dynamics are Unique in Kinship Families

April 22, 2026

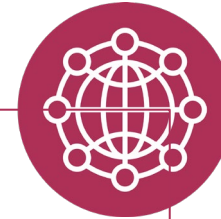
- Welcome, we will begin at the top of the hour
- Please type in the **chat** box - your name, state, tribe (if applicable), and role
- Type questions in the **chat** box at any point during our time together
- **We will provide a separate meeting link for a 30-minute Q&A with our presenters, starting in an hour, at 3 PM ET**
- By the end of the week, all participants will receive a link to the slides and the recording

Who We Are & How We Help



Learning Collaboratives and Information Dissemination

The Network hosts webinars and facilitates learning collaboratives.



A Centralized Hub

The Network is elevating exemplary kinship/grandfamily practices and programs from around the country.



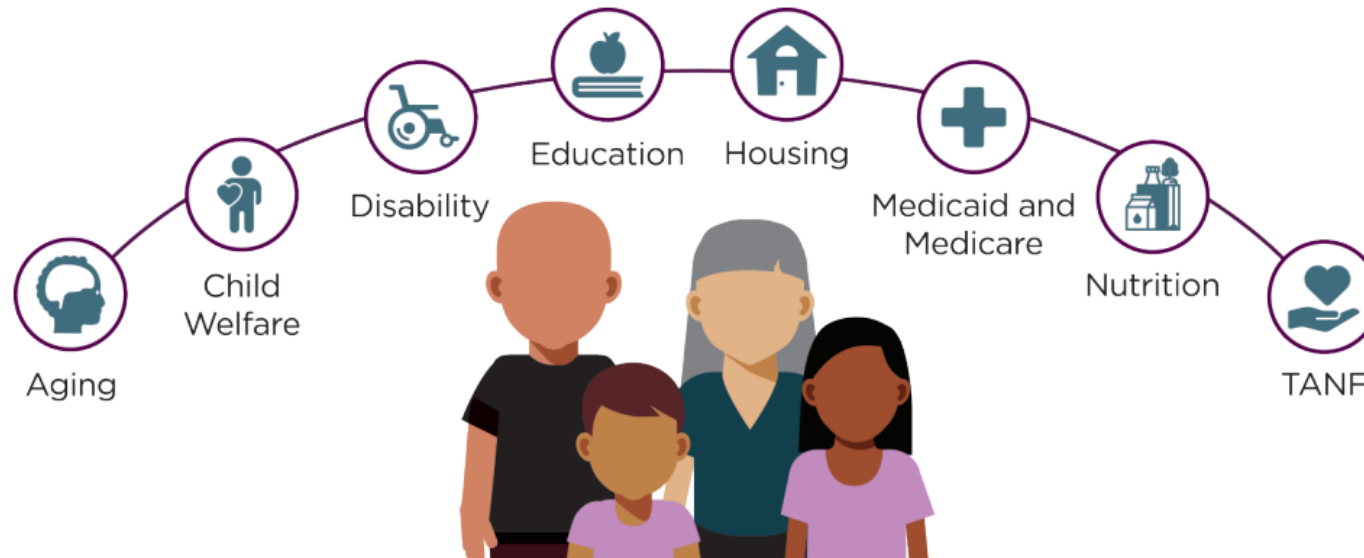
Bridging Systems for Kinship Families

The Network is helping Idaho, San Diego County, and Oneida Nation of Wisconsin optimize their collaborative approaches and improve their services. Solutions will be replicable for others.



Individual Assistance

We respond to individual requests for help from government agencies and nonprofit organizations.



GRAND *Voices*

together for a GRAND impact



GRAND Voices is a national network of **caregiver advocates** who help shape policies and practices that support grandfamilies and kinship families raising children.

WHAT YOU GET



Make an Impact
Your voice helps shape policies, programs, and resources.



Connect
Join a national community of caregivers who understand.



Grow & Learn
Build skills and confidence through training and learning opportunities.



Lead Change
Turn your experience into action that supports families across the country.

WHO IT'S FOR



Grandparents & Great-Grandparents



Aunts, Uncles & Other Relatives



Adult Siblings



Close Family Friends



Non-Relative Caregivers



GET INVOLVED!

Contact Robyn Wind-Tiger
GRAND Voices Support Coordinator
Generations United
rwind@gu.org | 202-303-3428

gu.org



Your voice. Your experience. Our future. *Stronger together.* Greater impact.

Welcome Our Presenter



Dr. Joseph Crumbley
Subject Matter Expert
with the Grandfamilies &
Kinship Support Network
at Generations United

Family Dynamics and the Impact of Kinship Care

Dr. Joseph Crumbley, LCSW

www.drcrumbley.com

Module 2:

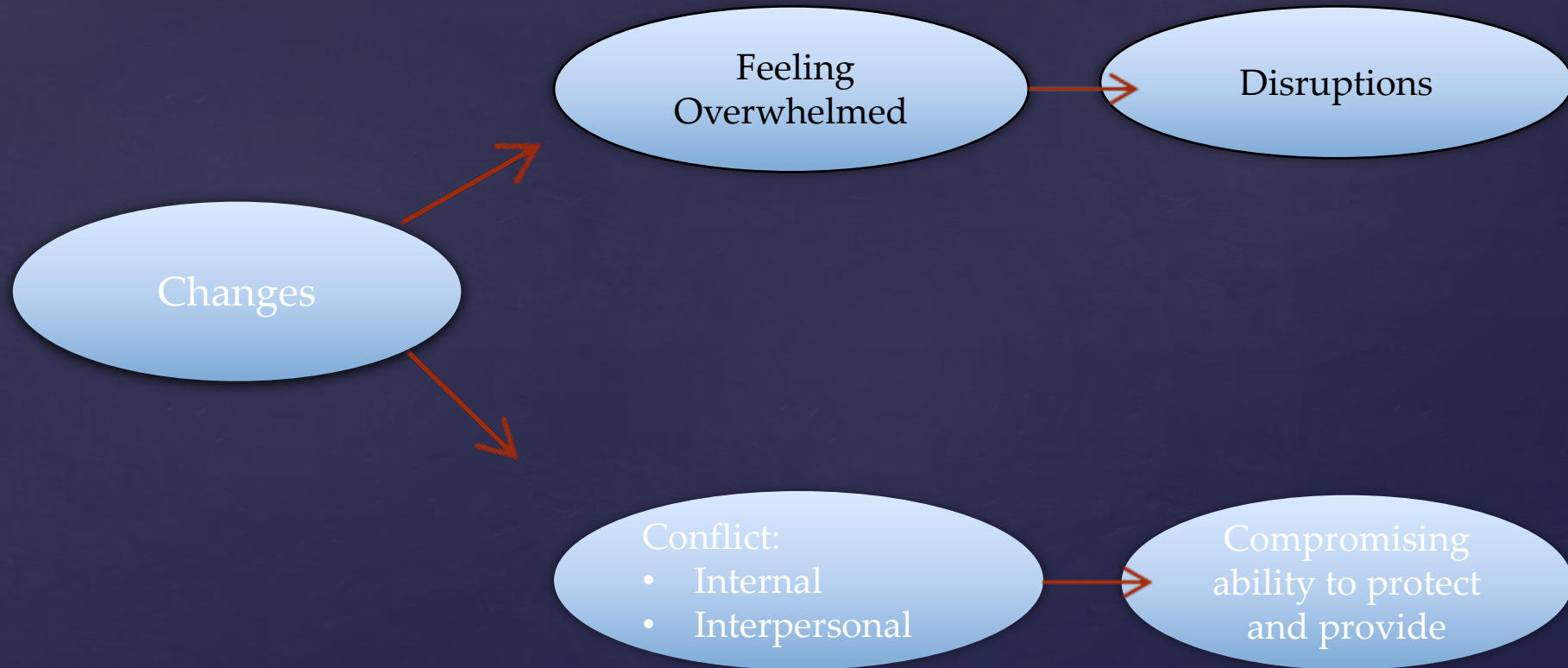
Family Dynamics and the Impact of Kinship Care

- ▶ How Kinship Care Changes and Impacts Family Dynamics
- ▶ Differences in Family Dynamics Between Kinship Families and Non-Relative Resource Families (Foster and Adoptive Parents)
- ▶ How does Family Dynamics change in Kinship Care
- ▶ How do these changes in Family Dynamics result in Kinship Risk Factors

Kinship Care Risk Factors Impacting Caregivers

SOCIALLY	EMOTIONALLY	ENVIRONMENTALLY
Isolation	Shock	Legalities
Lifestyle Changes	Fear	Transportation
Work schedule	Chaos	Child Care
Retirement	Resentment	Financial
Couples/Dating Issues	Guilt	Space
Social Schedule	Loss/Anger	Safety of the Child
Privacy	Intrusion	Material items

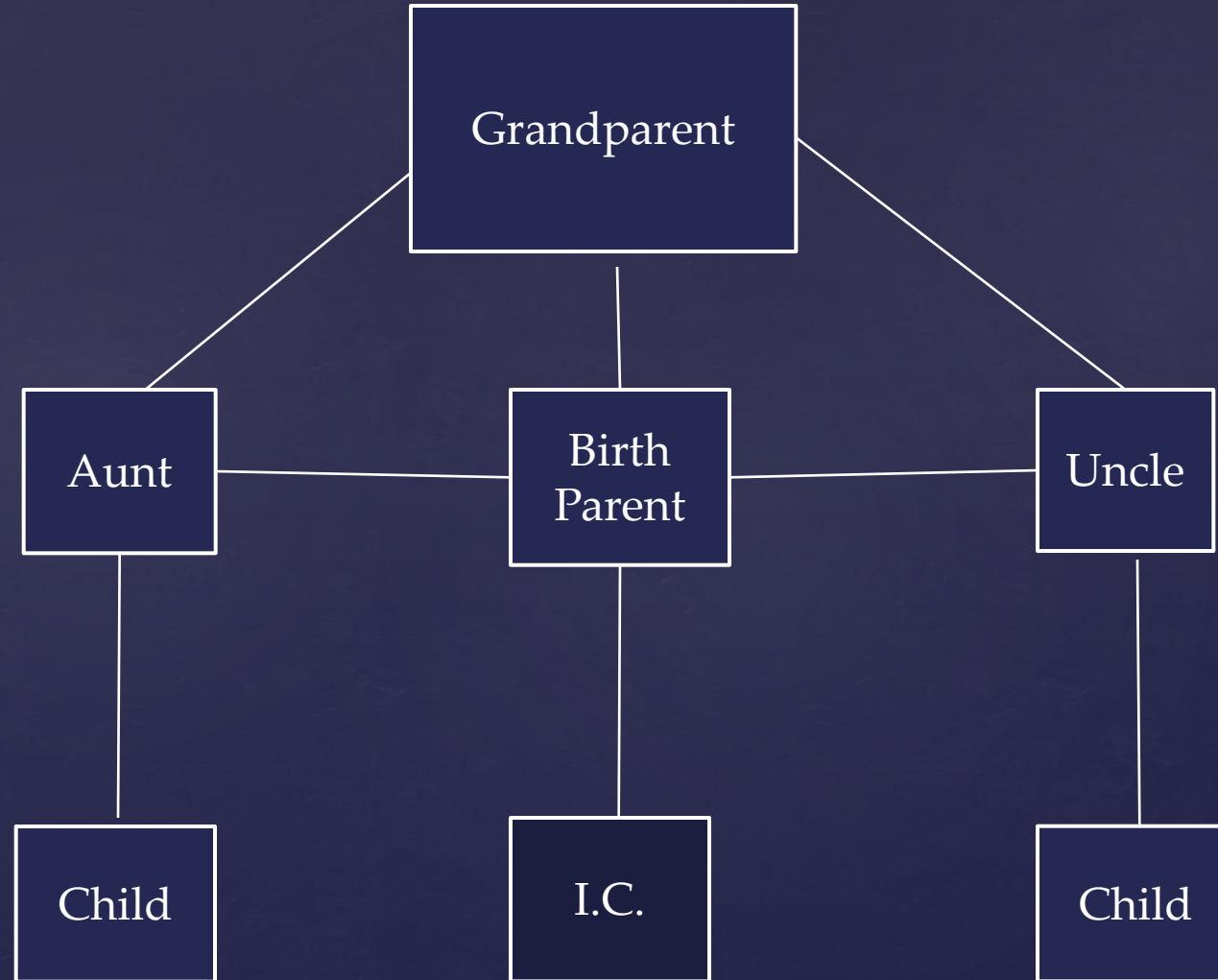
How Risk Factors Impact Safety Permanency and Well Being



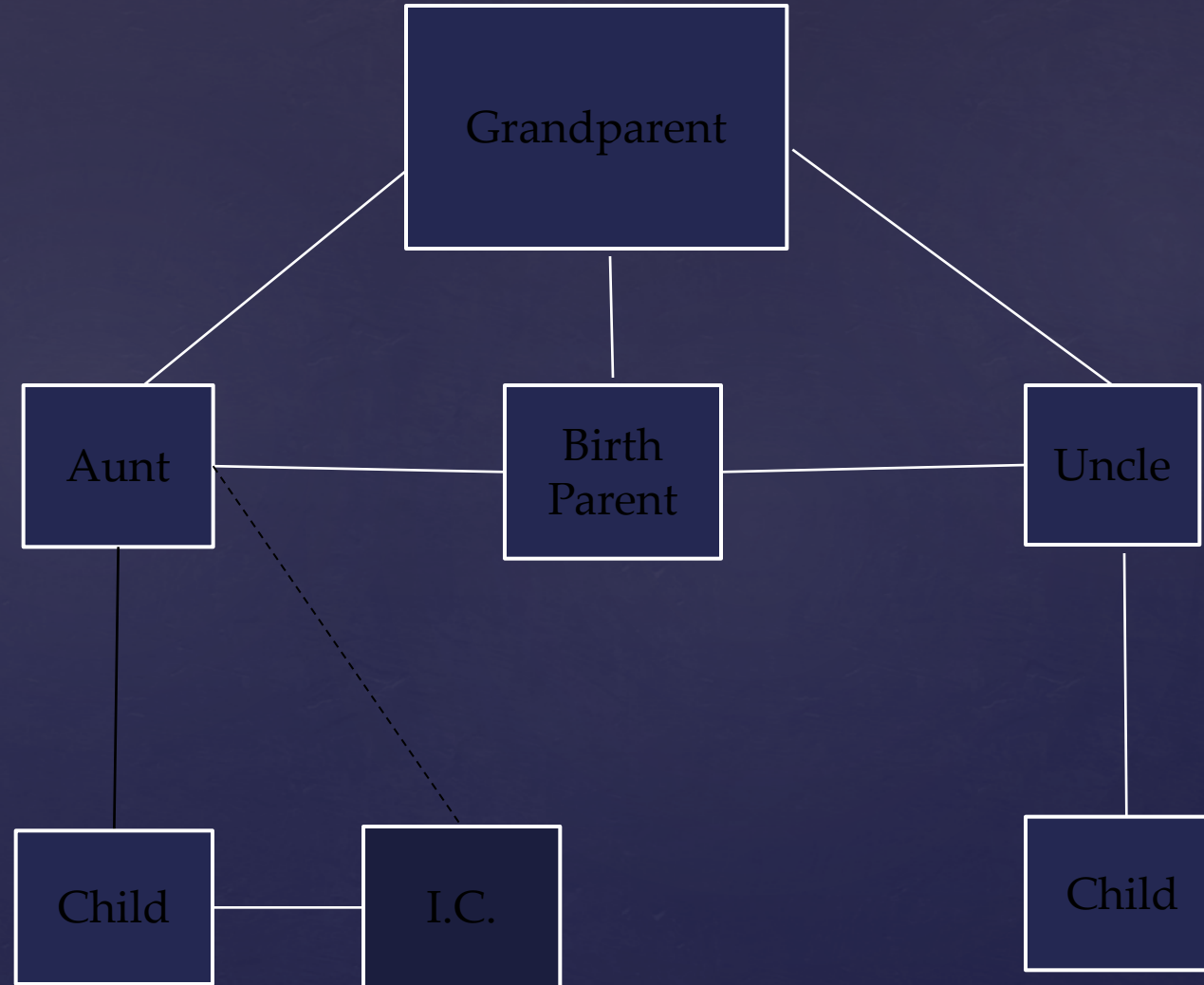
Conditions Under Which Caregivers Initiate Kinship Care:

- Unplanned
- By Default
- In a Crisis
- Limited Support

Genogram of Kinship Family



Genogram of Kinship Family



How Kinship Care Changes Family Dynamics

Placing Children in Kinship Care changes **PRE-EXISTING:**

- Relationships
- Responsibilities
- Roles
- Accountability
- Power
- Status
- Authority
- Loyalties

How Kinship Care Changes Family Dynamics

Family Members often assume they have the same
Rights, Entitlements and Privileges
they had **PRIOR TO** the child's placement

Mapping Changes in Family Dynamics Can Identify:

- Re-alignments
- Resistance
- Sabotage
- Collusion
- Where buy-in is needed
- Losses

Differences Between Kinship Caregivers and Non-Relative Resource Families

KINSHIP FAMILIES

- Changes in Pre-Existing Relationships Between the Members of the Triad (child, birth parents and caregiver)
- Family members feel they have the same rights and entitlements in caregiver's family PRIOR to placement

NON-RELATIVES

- No Pre-Existing Relationship between Caregiver and Birth Parents
- No Rights or Entitlements in Caregiver's family

Differences Between Kinship Caregivers and Non-Relative Resource Families

KINSHIP FAMILIES

- Kinship Care is unplanned, by default, in a crisis and with limited resources at the time of placement
- The triad will need to be prepared for changes in pre-existing relationships and roles
- Extended family needs to support the changes in order to stabilize the triad

NON-RELATIVES

- Caregiving is planned, pursued with support and training prior to the child's placement
- No pre-existing relationships to change
- No pre-existing relationships to change

Module #2: Wrap-Up and Summary

- Impact of Kinship Care on Caregivers
- Risk Factors Resulting from the Impact of Kinship Care
- How Kinship Care Changes and Impacts Family Dynamics
- Differences in Family Dynamics Between Kinship Families and Non Relative Resource Families (Foster and Adoptive Parents)

Module #4
Loyalty Issues

LOYALTY ISSUES IN KINSHIP CARE

DR. JOSEPH CRUMBLY, LCSW

Module # 4

LOYALTY

Module #4: Loyalty

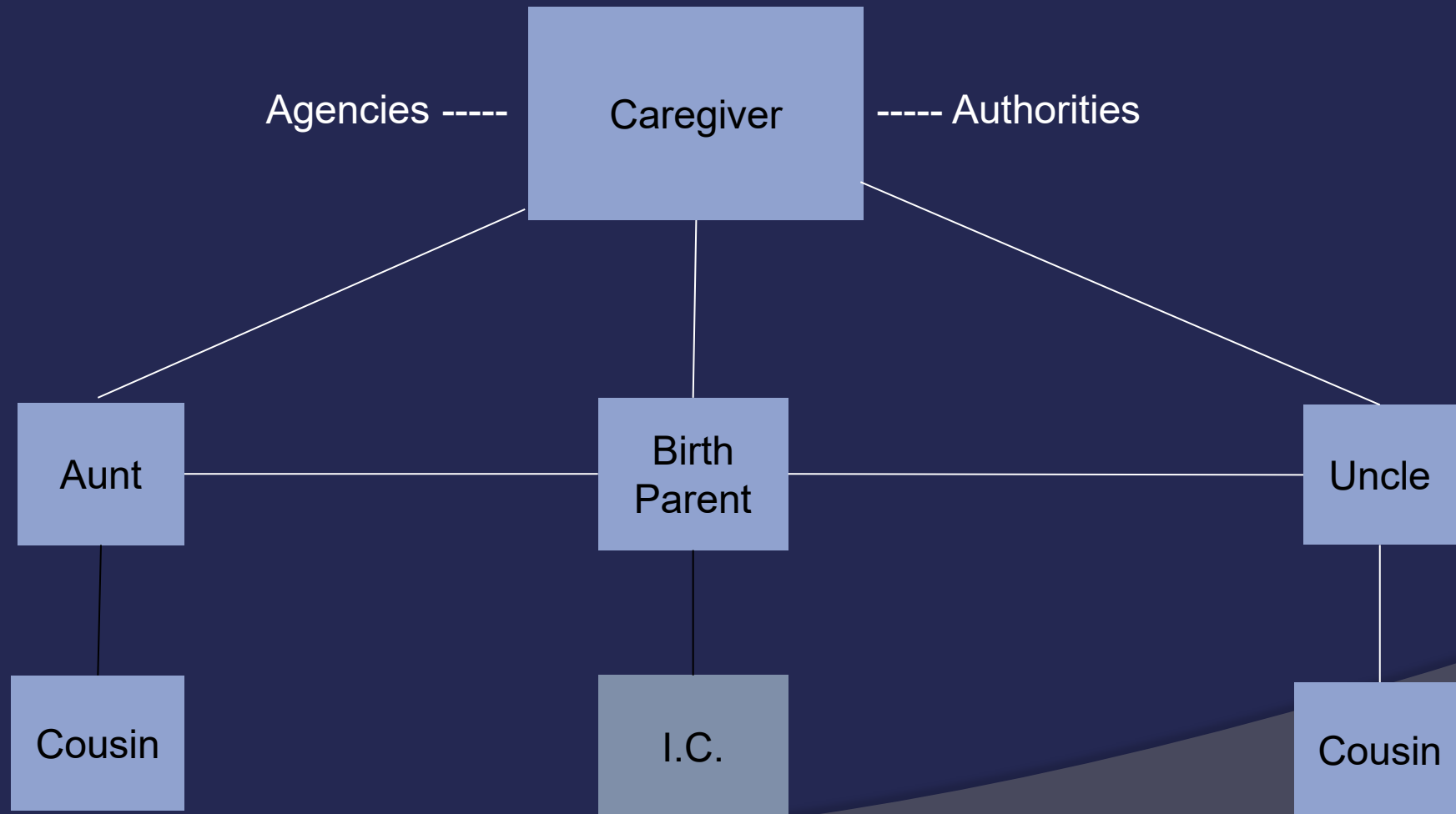
Overview:

- Cues and Sources of loyalty issues experienced by Caregivers
- Goals, Approaches and Scripts with Caregivers about managing their loyalties
- Differences in loyalty issues between Kinship Caregivers and Non-Relative Resource Families (foster and adoptive parents)

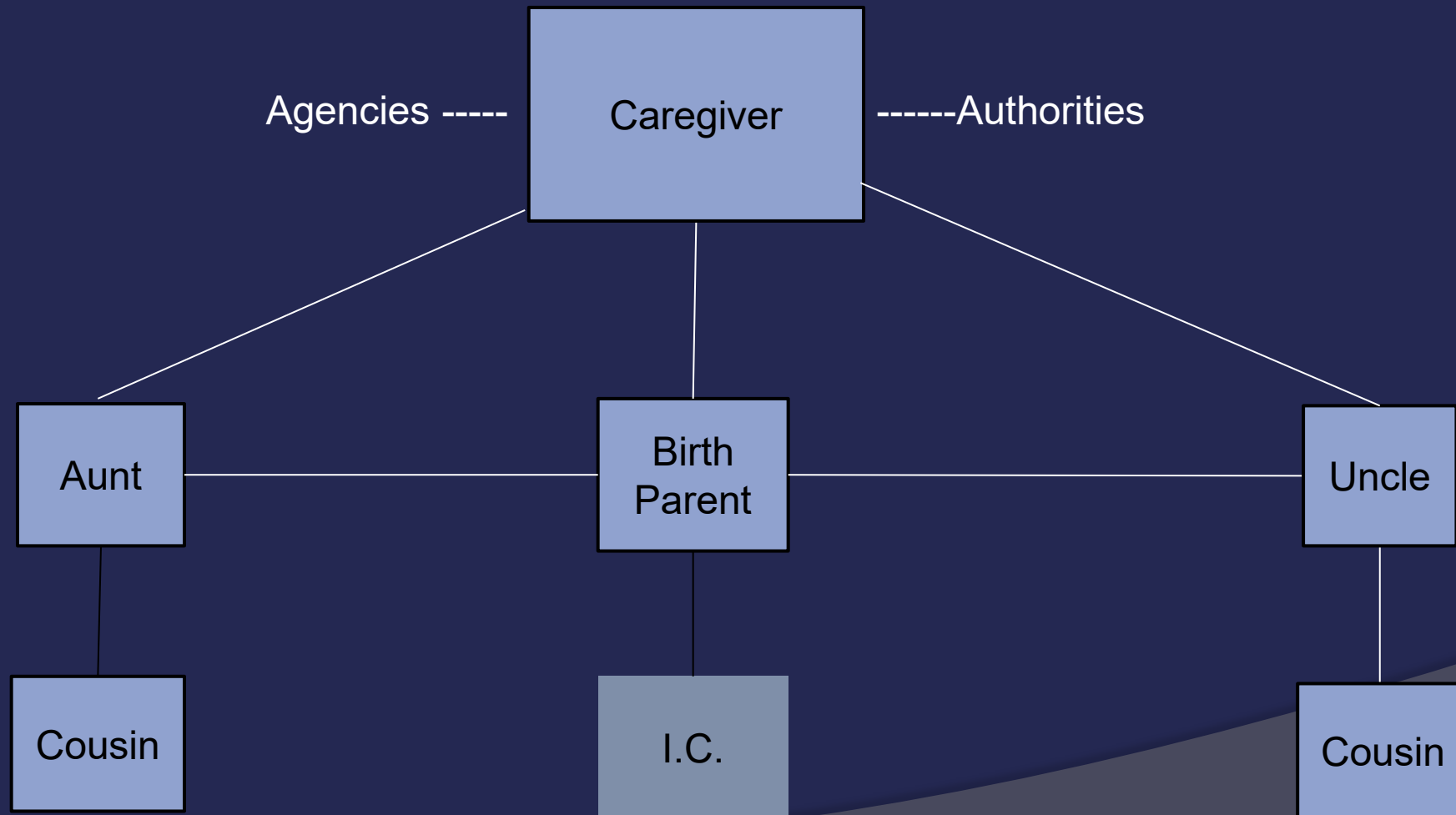
Questions to Ask Yourself While Watching the Video

- How do loyalty issues impact a Caregiver's ability to provide safety, well-being and permanency for the child(ren) in their care?
- What goals, approaches and scripts would be useful in your practice with Kinship Care Providers?

Genogram of Shifting Loyalties



Genogram of Shifting Loyalties



Sources of Feeling Disloyal

- Usurping or replacing the birth parent's role, position or authority
- Split and dual loyalties to both the birth parents and the birth child
- Feeling disloyal by placing the birth child's needs before the birth parents
- When disclosing negative information about the birth parent to agencies or authorities
- Pursuing permanent, legal or formal relationships with the child
- Allowing the child to develop attachments and bonds with the caregiver
- When interactions about the family are dictated by the child's needs, agency policies, procedures and court orders

Verbal Cues Indicating Potential Risks

- “I can’t see my child living on the street and not letting her in. She’s always been there when I needed her.”
- “I can’t put my brother out because of some criminal report!”
- “I can’t chose between my son and grandchild, when it comes to who can live here.”
- “I can’t ask my relatives to have background checks and home inspections since I am living in their home.”
- “My sister or family would never forgive me if I adopted her child. I’ll keep the child, but I won’t adopt.”
- “You have to ask my brother those personal questions if you want any personal information about him.”

Protective Goals and Behaviors for Caregivers

- Prioritizing the child's safety, well-being and permanency over the birth parent and family, when necessary
- Re-defining pre-existing roles and relationships with the birth parent and extended family
- Develop responses to “**disloyalty triggers**,” in order to avoid being manipulated or compromising the child's safety and well being
- Avoid infantilizing the birth parent

Strategies and Scripts with Caregivers

GOALS

- ❑ PRIORITIZING THE CHILD

SCRIPTED RESPONSES

- ❑ WHO NEEDS YOU THE MOST?
- ❑ WHO'S LESS ABLE TO HELP THEMSELVES?
- ❑ WHO'S TURN IS IT NOW?

Strategies and Scripts with Caregivers

GOALS

- ❑ REDEFINING PRE-EXISTING ROLES AND RELATIONSHIPS

SCRIPTED RESPONSES

- ❑ “YOU CAN’T BE A PARENT TO BOTH YOUR SON AND GRANDSON. YOU’RE ONLY ONE PERSON.”
- ❑ YOU MAY LOSE YOUR GRANDSON IF YOU TRY TO BE A PARENT TO BOTH.
- ❑ “WHO NEEDS YOU AND YOUR HOME THE MOST?” “WHO ELSE CAN HELP HIM?” “YOU ARE ALREADY HELPING HIM BY CARING FOR HIS SON.”

Strategies and Scripts with Caregivers

GOALS

- ❑ IDENTIFYING AND PLANNING FOR “DISLOYALTY TRIGGERS”

SCRIPTED RESPONSES

- ❑ “WHEN YOUR SISTER CALLS, AFRAID THAT SHE HAS OVERDOSED, YOU’VE ALWAYS PICKED HER UP AND BROUGHT HER TO YOUR HOME.”
- ❑ “WHAT ARE YOU GOING TO DO DIFFERENT, NOW THAT YOUR NEPHEW IS WITH YOU UNDER A PROTECTION ORDER FROM HIS MOTHER?”
- ❑ WHO ELSE CAN SHE CALL SINCE YOU CAN’T TAKE CARE OF THEM BOTH?

Strategies and Scripts with Caregivers

GOALS

- ❑ NOT INFANTILIZE THE BIRTH PARENT

SCRIPTED RESPONSES

- ❑ “I KNOW YOUR SON WILL ALWAYS FEEL LIKE YOUR CHILD, AND THAT’S NORMAL: BUT, WHO WILL THE COURTS AND THE AGENCIES EXPECT YOU TO TAKE CARE OF FIRST?”
- ❑ YOU MAY SEE HIM AS A CHILD, BUT THE COURTS AND AGENCIES ARE SEEING AND TREATING HIM AS AN ADULT.

Differences Between Kinship Caregivers and Non-Relative Families

KINSHIP CAREGIVERS

- ❑ INITIAL EXPERIENCES OF LOYALTY ARE WITH BIRTH PARENTS
- ❑ INITIAL ACCOUNTABILITY IS TO THE BIRTH PARENT AND/OR EXTENDED FAMILY
- ❑ PRE-EXISTING LOYALTIES, ROLES AND ACCOUNTABILITY WILL NEED TO BE REDEFINED BETWEEN THE CAREGIVER, BIRTH PARENT, CHILD AND FAMILY

Caregiver's must recognize and plan for "disloyalty triggers" in order to protect themselves from manipulation or compromising the child's safety

NON-RELATIVE FAMILIES

- ❑ INITIAL EXPERIENCES WITH LOYALTY ARE WITH THE CHILD
- ❑ INITIAL ACCOUNTABILITY IS TO THE AGENCY OR COURTS
- ❑ NO PRE-EXISTING RELATIONSHIP BETWEEN THE CAREGIVER, BIRTH PARENT AND CHILD
- ❑ NO PRE-EXISTING RELATIONSHIPS RESULTING IN "DISLOYALTY TRIGGERS"

Wrap-Up and Summary

Summary

- ❑ Cues and Sources of loyalty issues experienced by Caregivers
- ❑ Goals, Approaches and Scripts with Caregivers about Managing their loyalties
- ❑ Differences in loyalty issues between Kinship Caregivers and Non-Relative resource families (foster and adoptive parents)

Join Us for our Next Webinar!



Wednesday, May 11, 2026

2:00 p.m. – 3:30 p.m. ET

Register Here



Connect & Access Support

Request assistance

We will add you to our monthly newsletter list, unless you ask us not to. To see past issues: www.gksnetwork.org/the-network-connection-newsletter/

For the latest updates, follow the Network on [LinkedIn](#)





The Network is supported by the Administration for Community Living (ACL), U.S. Department of Health and Human Services (HHS) as part of a financial assistance award totaling \$9,950,000 with 95 percentage funded by ACL/HHS and \$523,684 and 5 percentage funded by non-government sources. The contents are those of the authors and do not necessarily represent the official views of, nor an endorsement, by ACL/HHS, or the U.S. Government.