

WELCOME

Identifying and Engaging Untapped Partners to Support Kinship Families

June 13, 2023

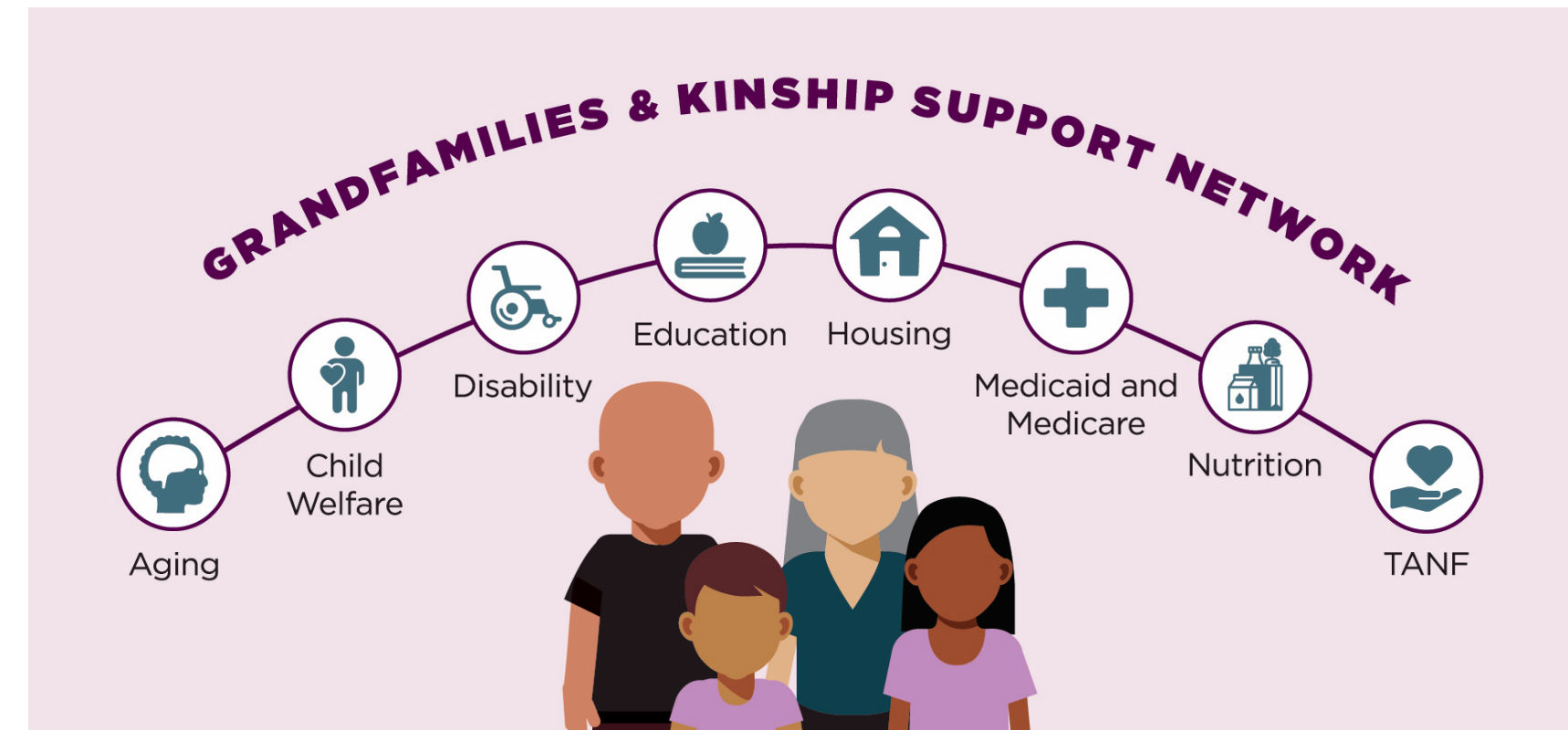
- We will begin at the top of the hour
- Please type in the **chat** - your name, state, tribe (if applicable), and role
- We'll pause for questions throughout – please type your questions in the **chat** box at any time
- All participants will receive a link to the slides and the recording by the end of the week



GRANDFAMILIES & KINSHIP SUPPORT NETWORK

A National Technical Assistance Center

- 5-year (2021-2026), \$10-million cooperative agreement with the Administration for Community Living
- Generations United has worked on behalf of and with kinship/grandfamilies since 1997
- Purpose is to provide technical assistance to the array of government agencies and organizations that serve kinship families
- Not designed to help the families directly – working to improve systems for families



How We Help



Learning Collaboratives and Information Dissemination

The Network hosts [webinars](#) and facilitates learning collaboratives.



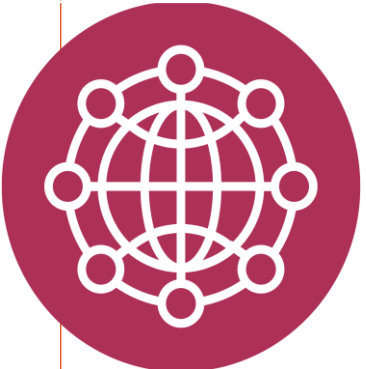
Individual Assistance

We respond to [individual requests for help](#) from government agencies, and nonprofit organizations.



Targeted, Specialized Support

For jurisdictions that want and are ready for a larger investment of effort, the Network will help optimize their collaborative approaches and improve their services. Solutions will be replicable for others.



A Centralized Hub

The Network is elevating exemplary kinship/grandfamily practices and programs from around the country on its new accessible website, www.GKSNetwork.org.

The First-Ever National Technical Assistance Center for those who Serve Kinship/Grandfamilies

We help government agencies and nonprofits in states, tribes, and territories work across jurisdictional and systemic boundaries to improve supports and services for families in which grandparents, other relatives, or close family friends are raising children.



Our Newest Resources

- **Aging Network Services and Supports for Kin/Grandfamily Caregivers**
<https://www.gksnetwork.org/resources/aging-network-services-and-supports-for-kin-grandfamily-caregivers/>
- **Black Kinship Families and Culturally Appropriate Engagement**
<https://www.gksnetwork.org/resources/black-kinship-families-and-culturally-appropriate-engagement/>
- **Caring for a Child Impacted by Fetal Alcohol Spectrum Disorder (FASD)**
<https://www.gksnetwork.org/resources/caring-for-a-child-impacted-by-fetal-alcohol-spectrum-disorder-fasd/>
- **Connecting with Families in Black and Indigenous Communities**
<https://www.gksnetwork.org/resources/connecting-with-families-in-black-and-indigenous-communities/>
- **Our Next Webinar: Building Evidence of Success for Kinship Programs: Tips and Strategies – July 17th 2pm ET** Register at <https://www.gksnetwork.org/events/>

Stay Connected & Access Support

Sign up for our monthly newsletter, which will provide you with updates on new Network resources.





The Network is supported by the Administration for Community Living (ACL), U.S. Department of Health and Human Services (HHS) as part of a financial assistance award totaling \$9,950,000 with 95 percentage funded by ACL/HHS and \$523,684 and 5 percentage funded by non-government sources. The contents are those of the authors and do not necessarily represent the official views of, nor an endorsement, by ACL/HHS, or the U.S. Government.

Family Resource Centers

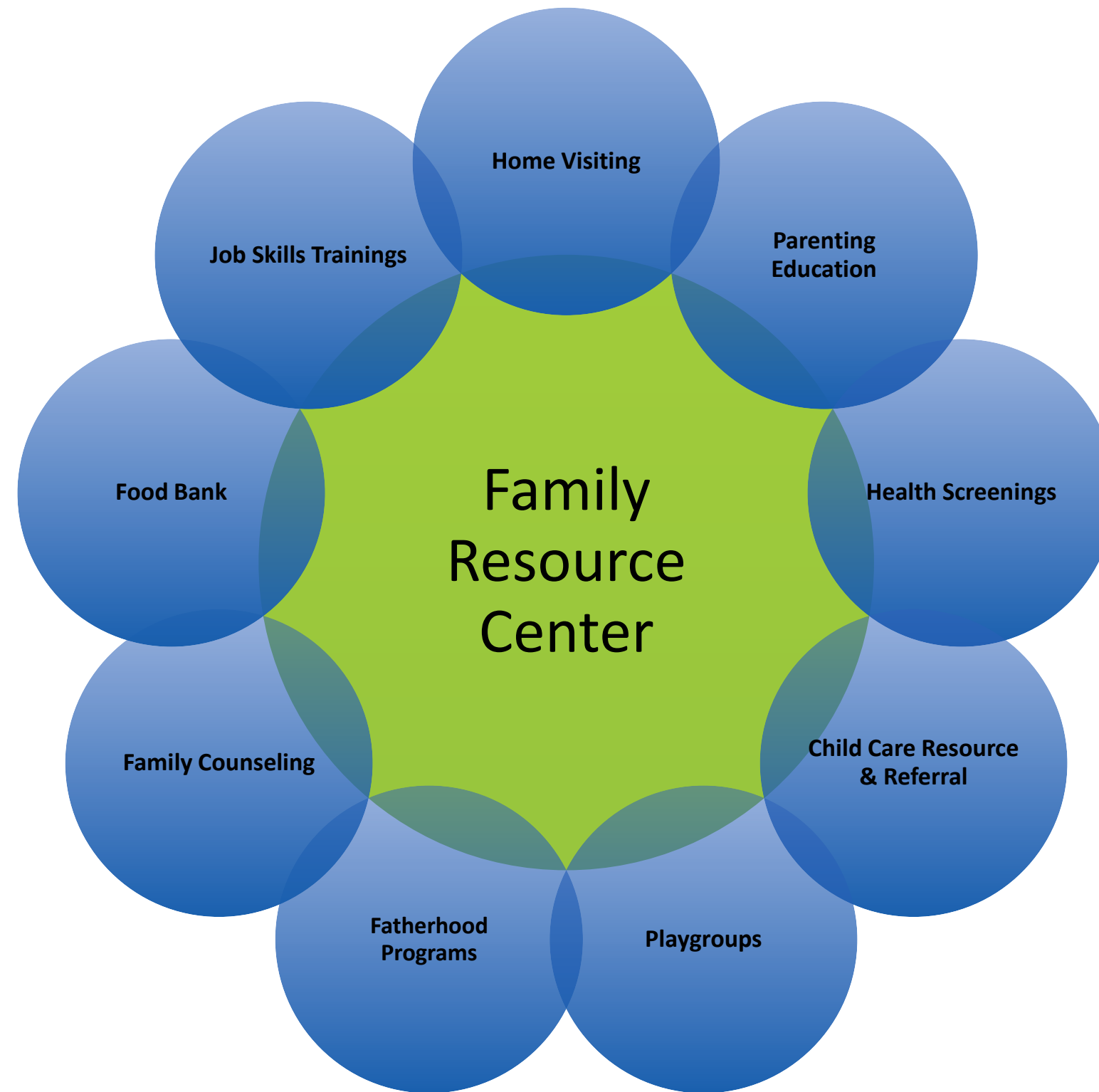


Family Resource Centers

- Multi-generational, strengths-based, family-centered approach
- Designed for all families
- No or low cost for participants
- Support families to build protective factors



Family Resource Centers



Family Resource Centers

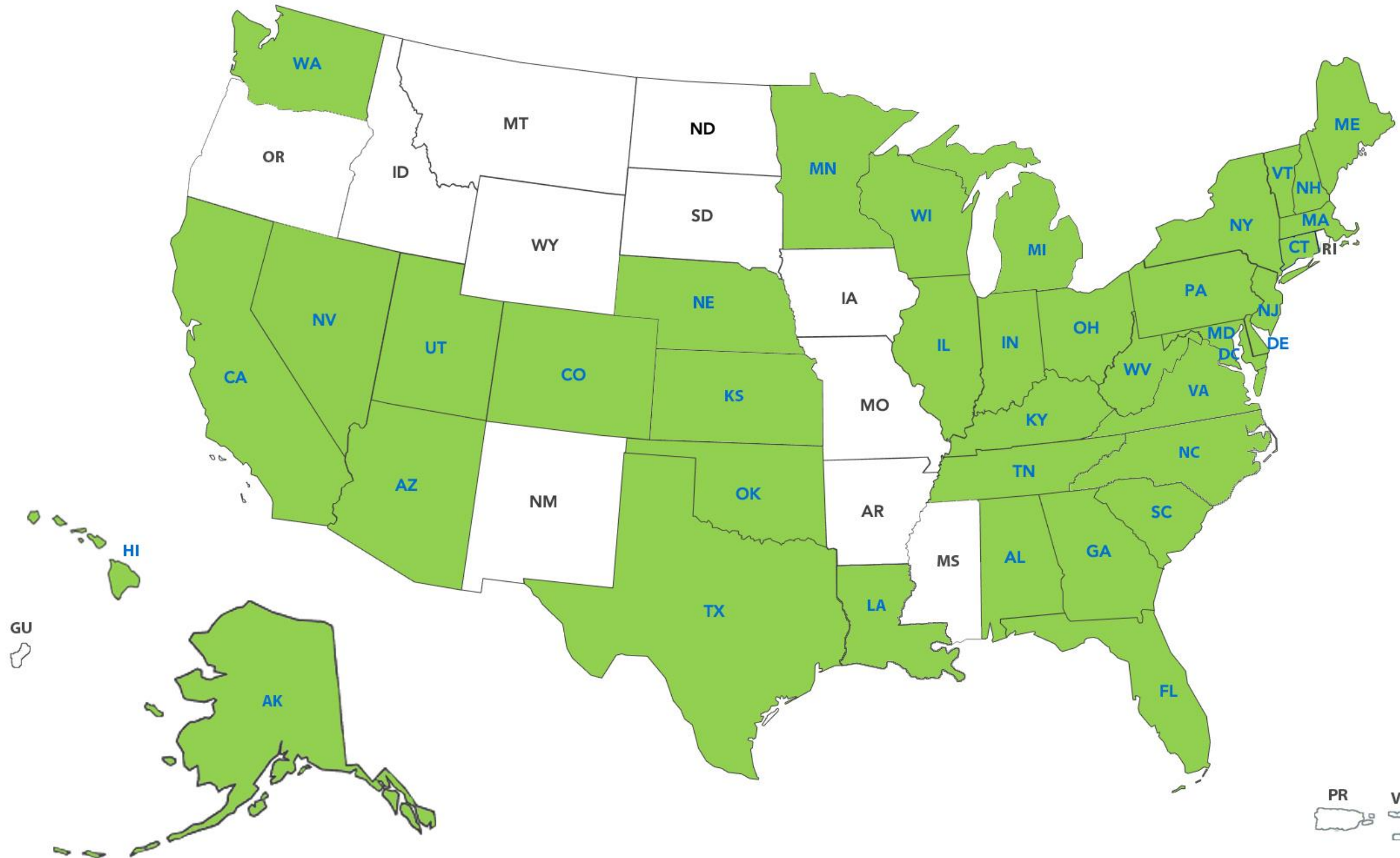


- Peer Support
- Social Connections



National Family Support Network

- 39 Member Networks of more than 3,000 Family Resource Centers



FRCs & Kinship



- FRCs regularly work with kinship families
- FRCs can be resource hubs for kinship families
- Networks of FRCs can be leveraged to implement Kinship Navigator programs



NFSN Webinar Wednesdays

September 29, 2021

Family Resource Centers: Supporting Grandfamilies and Kinship Navigation

Co-presented with Generations United

This webinar illustrates how FRCs support grandparents and kin caring for children, highlighting New Hampshire's effective leveraging of its Network of FRCs for federally-funded kinship navigation.



NATIONAL
Family Support
NETWORK

www.nationalfamilysupportnetwork.org

NFSN Resources

- Links to FRC Networks
- Member Network Snapshots



ALABAMA

ALABAMA NETWORK of
FAMILY
RESOURCE CENTERS

Contact: Joan Witherspoon-Norris • joan@anfrc.org • 205-746-2446
www.anfrc.org

The Alabama Network of Family Resource Centers (ANFRC) is a membership organization of nonprofit agencies that provide a wide array of services designed to protect children and strengthen families. ANFRC members are held to rigorous operational standards established by the Alabama legislature based on best practices for nonprofit management. These standards provide oversight of service delivery, fiscal management, and center administration and accountability. ANFRC envisions a state in which every family is thriving and every community has access to a strong and effective Family Resource Center. The Network is guided by these values: Stability for Children, Individualized Services, Strengths-based Partnerships, Collaborative Approach, Focus on Equity, Localized Approach, Prevention First, and Commitment to High Quality Operational Standards.

At a Glance	Network Functions
<ul style="list-style-type: none">• Network Structure: Independent Nonprofit• Network Annual Budget: \$358,000• Funding Sources:<ul style="list-style-type: none">◦ Federal Community-Based Child Abuse Prevention (through Alabama Department of Child Abuse and Neglect Prevention)◦ State Education Funds◦ Private Foundations◦ Earned Income• Types of Members:<ul style="list-style-type: none">◦ Community-Based FRCs: 23	<ul style="list-style-type: none">• Connecting Members• Training/Technical Assistance• Working on Systems Change/Policy/Advocacy• Pass-Through Funding to Members - occasionally• Marketing/Public Awareness Activities• Shared Data Management System

YEAR FOUNDED	<h3>Member Service Areas</h3> <ul style="list-style-type: none">• Parenting Support• Access to Resources• Family Development Services• Child Development Activities• Family Economic Success Activities• Intentional Multiple Family Member Engagement Activities 
1999	
NETWORK MEMBERS	
23	
INDIVIDUALS SERVED	
42,289	



Big Brothers Big Sisters®

MOUNTAIN REGION



Mission

Together, we are defenders of potential

Our Mission is to create and support one-to-one mentoring relationships that ignite the power and promise of youth. At Big Brothers Big Sisters we believe all youth should achieve their full potential



The Children We Serve

78% meet eligibility requirements for free or reduced-priced lunch

59% live with a single parent or in a non-parent led household

11% are cared for by a grandparent

63% are Hispanic, 21% are Native American and 14% are Anglo



Our Impact is Evident

Littles in our program are

90% more likely to do well in school

46% less likely to do drugs

89% less likely to make bad decisions

91% of Littles report feeling

better about themselves

3 out of 4 littles plan to enroll in

and graduate from college

Community-Based



**Work with volunteers
in the community to
partner with youth in
need of a Big**



**Spend four to six
hours a month
together**



**Activities range
based on
interests**



School-Based



- ▶ Bigs spend one hour each week at the Little's school
- ▶ Provide mentoring services
- ▶ Eating lunch
- ▶ Helping with homework
- ▶ High School Bigs

How Can You Get Involved



Refer a
Child



Be a Big



Spread the
Word



Be a
Partner

Thank You!

David Sherman

CEO

505-629-1057

david.sherman@bbbsmountainregion.org

www.bbbsmountainregion.org

Find Your Local BBBS Agency:

<https://www.bbbs.org/get-involved/>



**Big Brothers
Big Sisters®**

DEFENDING POTENTIAL



PRINCE OF PEACE
LUTHERAN CHURCH

Tapping into Faith Based Communities

Prince of Peace Lutheran Church
Fayetteville, GA

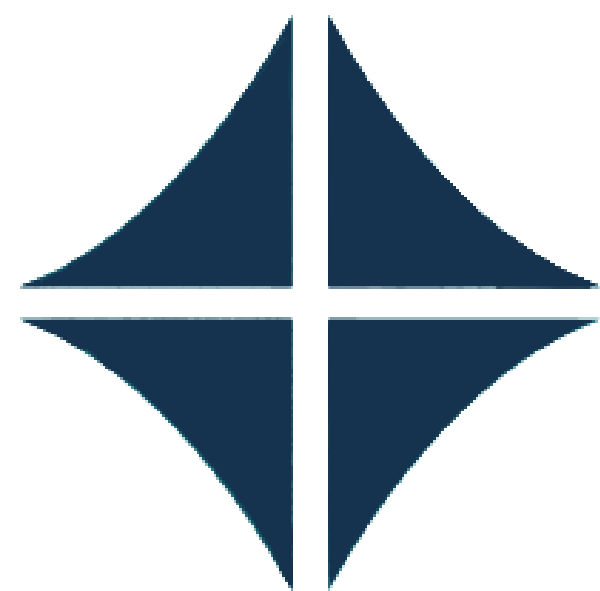
Pastor Scott Ness





Generations Together

Intergenerational Resource Center



PRINCE OF PEACE
LUTHERAN CHURCH



Tips for Tapping In...

- Unskilled Laborers who are ready to help
- How to get your foot in the door?
- Finding crossover in Mission
- Connections to other Organizations that can help in deeper ways.





PRINCE OF PEACE
LUTHERAN CHURCH

Tapping into Faith Based Communities

Prince of Peace Lutheran Church
Fayetteville, GA

Pastor Scott Ness ~ pastorscott@princeofpeacefayette.org



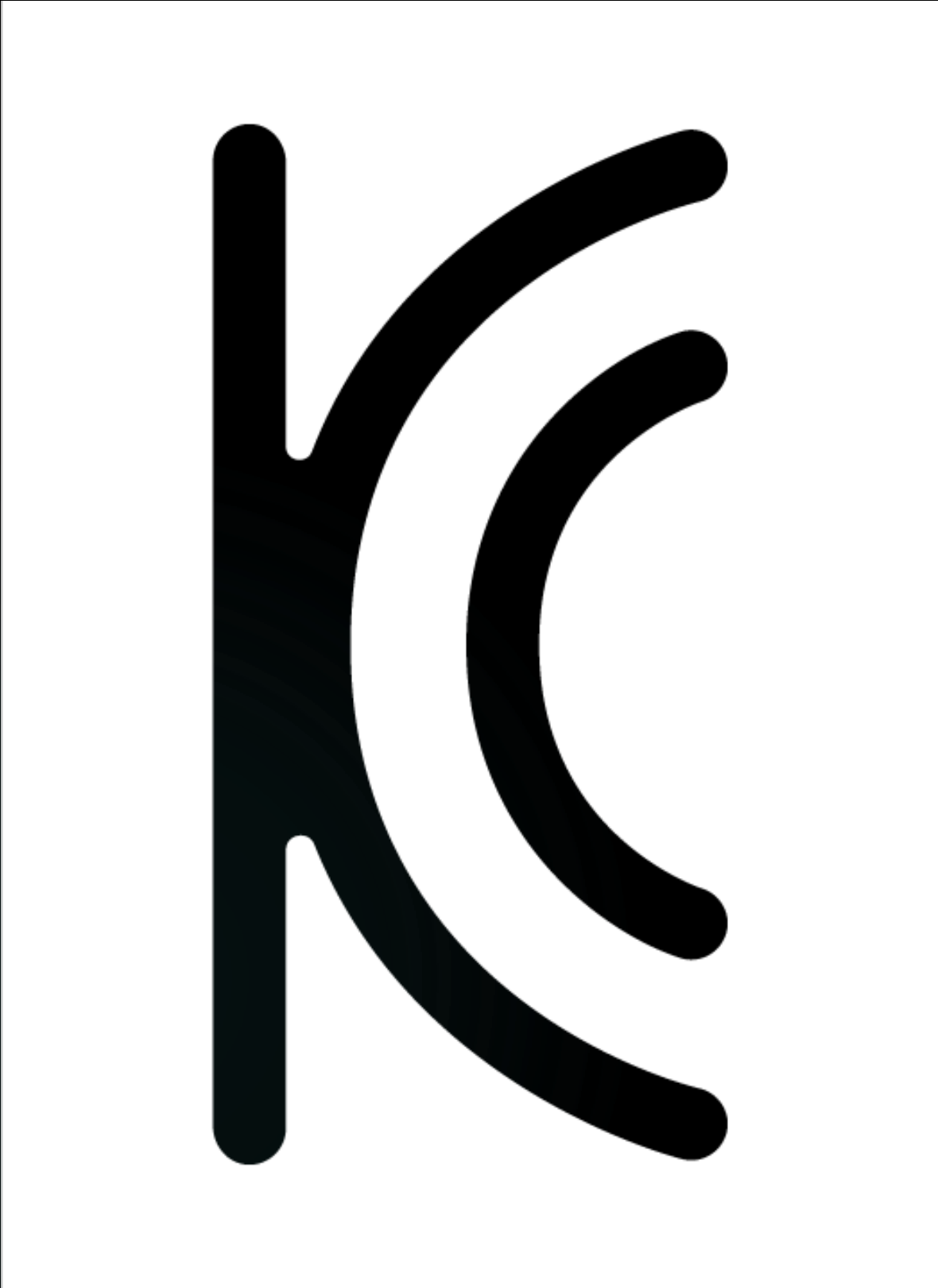
Mission

Our mission is to support and empower all of Michigan's kinship families through responsive information and referral services, education and training, and outreach and engagement with caregivers, service providers and communities to ensure that children in kinship families are safe, healthy, nurtured and loved.

Vision

To be the statewide central hub of information, resources, referral, and coordination for all kinship families in Michigan so that children in kinship care regardless of race, where they live, or income, achieve safety, permanence and well-being.





Kinship Caregivers
are the experts of
their own lives.

THE KCRC IS ONE OF MANY RESOURCES
AVAILABLE TO PROVIDE SUPPORT TO MI
CAREGIVERS WITH INFORMATION, AND
REFERRALS TO HELP KINSHIP CAREGIVERS
REACH THE GOALS THEY HAVE FOR THEIR
FAMILIES.



Current Services

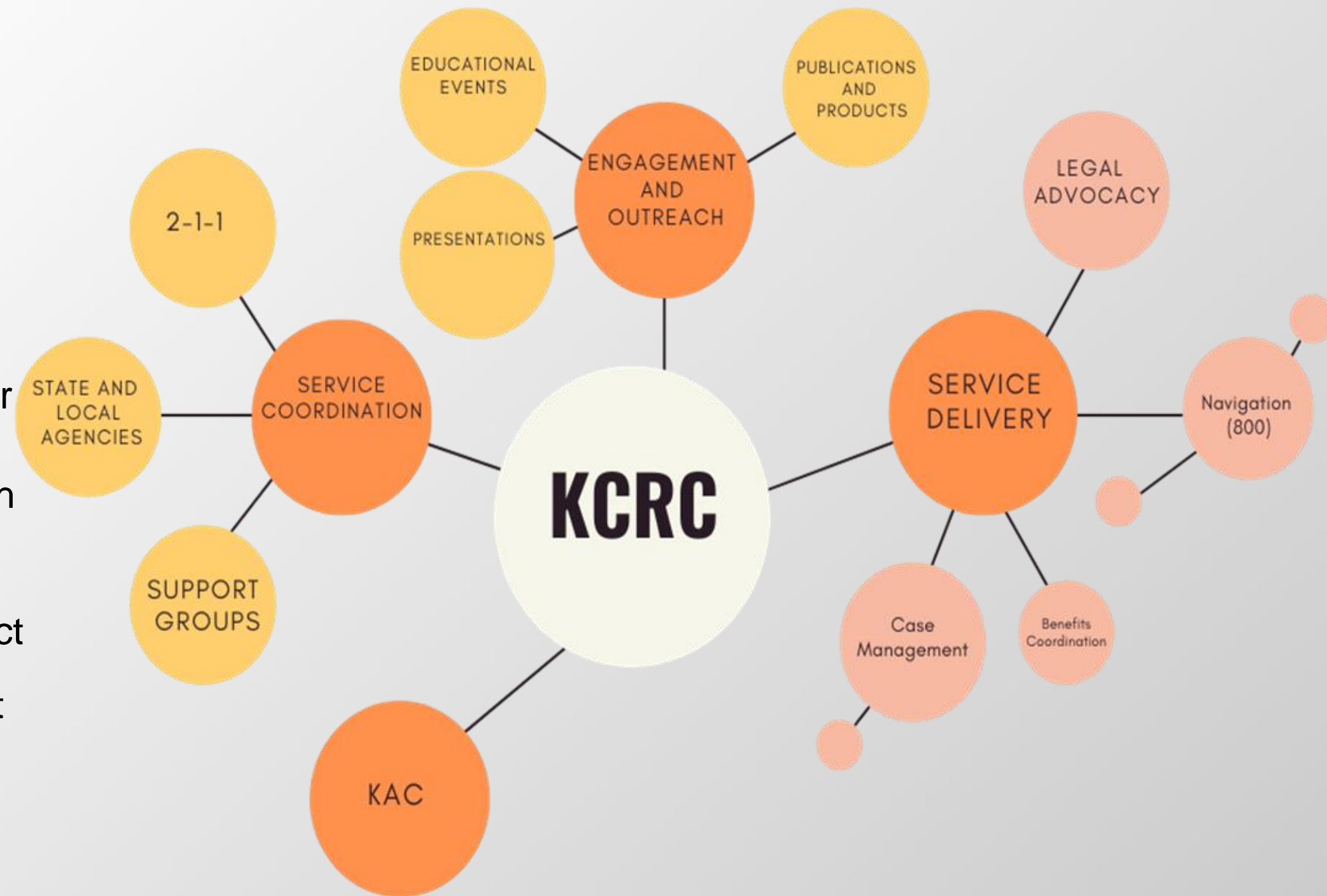
- Outreach, Information, and referral assistance
- Service coordination including 2-1-1 integration
- Trainings, workshops, and outreach
- Support group calendar on website
- Promote partnerships between public and private organizations
- Family Advocate Enhanced Service Model

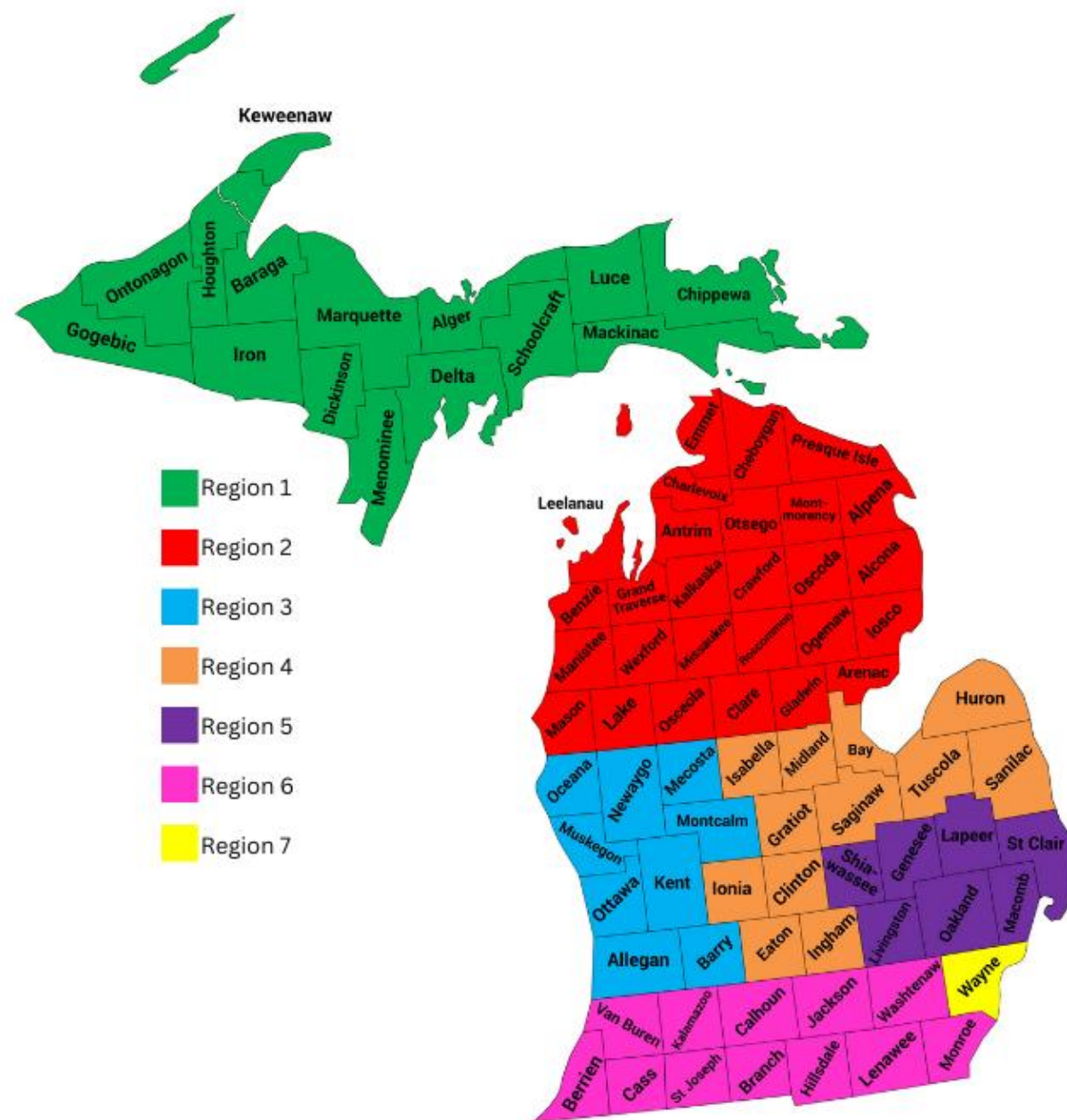
**Kinship
caregivers,
we've got
your back.**



Current Model

- KCRC provides direct services through Navigation, Legal Advocate and a pilot for Case Management
- Current phone outreach is focused on formal families: MDHHS
- Informal families contact us through word of mouth or attendance at educational/outreach events





MichiKIN

The MichiKIN Network is envisioned as multiple regionally located organizations committed to building statewide capacity for improving outcomes for kinship families.



Stay in Touch!

MSU Kinship Care Resource
Center

Email: kinship@msu.edu
www.kinship.msu.edu

1-800-535-1218

Beth Lindley, LMSW
lindleyb@msu.edu
517-353-3906



Family is a relative term.

